



From VMware to Nutanix: Park Place Delivers Migration for both Production and Disaster Recovery Sites

CASE STUDY

THE CHALLENGE

A large enterprise customer was running critical workloads on VMware vSphere 7 paired with NetApp shared storage across both Production and Disaster Recovery environments. Over time, the environment became increasingly expensive and complex to operate. Rising VMware licensing costs, separate hypervisor and SAN management layers, and limited scalability created operational friction and budget pressure.

OUR SOLUTION

The customer partnered with Park Place to lead a full-scale migration to Nutanix Cloud Platform with AHV, standardizing both Production and DR environments on a single, software-defined architecture.

Park Place designed and deployed a 6-node Nutanix AHV cluster for the Production environment and a 5-node cluster for the Disaster Recovery site, delivering RF2 resiliency across both sites. The solution leveraged Nutanix AOS, AHV, Prism Central, and Prism Element to consolidate compute, storage, and virtualization into one unified platform.

To ensure a smooth transition, Park Place executed the migration using Nutanix Move in carefully planned waves. The engagement began with detailed discovery and dependency mapping across more than 300 virtual machines to identify application relationships, performance requirements, and DR considerations. Migration waves were sequenced from lower-risk systems to business-critical workloads, with validation and testing performed at each stage.

Before final cutover, Park Place conducted application-level testing, performance validation, and disaster recovery testing to confirm resiliency and continuity. This structured approach ensured minimal downtime per migration wave while maintaining full operational stability.

THE RESULTS

Park Place successfully migrated the customer's environment from VMware and NetApp to Nutanix AHV, delivering a simplified, resilient, and cost-effective infrastructure across Production and DR.

- Migration of 200+ virtual machines with minimal downtime per wave
- Transition of 88+ TB of data across Production and Disaster Recovery
- Improved resiliency through RF2 distributed storage protection
- Elimination of expensive VMware licensing and NetApp support costs

Through Park Place's expertise, the customer modernized its infrastructure, reduced complexity and cost, and gained a resilient, future-ready platform that supports long-term operational efficiency. If you need a migration from VMware to another platform, reach out to us today!

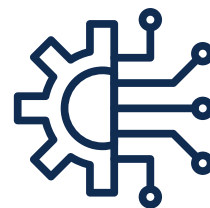
Leadership needed a modern, integrated platform that could simplify operations, reduce long-term costs, and deliver predictable scalability without disrupting more than 200 production virtual machines. With business-critical systems at stake and DR requirements to maintain, the migration had to be executed with minimal risk and downtime.

PARK PLACE TECHNOLOGIES

Park Place Technologies, founded in 1991, is a global IT infrastructure service firm. We help 21,500 organizations – including half the Fortune 500 – fuel innovation by dramatically reducing time and money spent on IT infrastructure management, while boosting performance and Uptime.

Powered by the world's largest on-the-ground engineering team, a robust group of advanced engineers, and our global Enterprise Operations Centers, Park Place delivers significant cost savings on hardware maintenance, software technical support, hardware procurement, and more. We also streamline IT infrastructure management, freeing internal teams from day-to-day tasks, enabling them to focus on strategic initiatives.

Park Place Technologies: Save. Simplify. Innovate.
For more information,
visit ParkPlaceTechnologies.com.



200+

VIRTUAL MACHINES



88+

TB OF DATA